



**Shri Swami Vivekanand Shikshan Sanstha ,
Kolhapur**

(Affiliated To Shivaji University, Kolhapur)

Sansthamata Sushiladevi Salunkhe Mahila Shikshanshastra Mahavidyalaya, Tasgaon

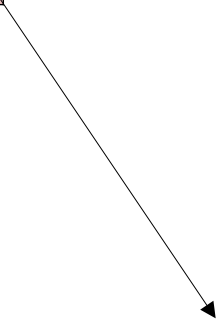
6.1.2

DOCUMENTS UPLOAD

THE ACADEMIC BODY



PRINCIPAL



B.Ed. Faculty

Students' Representative

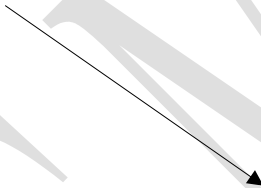
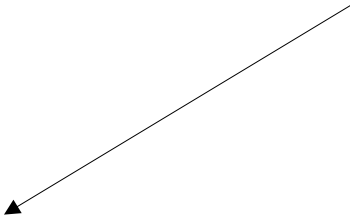
SS.M.S.M

**THE GENERAL ORGANIZATIONAL
STRUCURE**

Management
committee



Principal



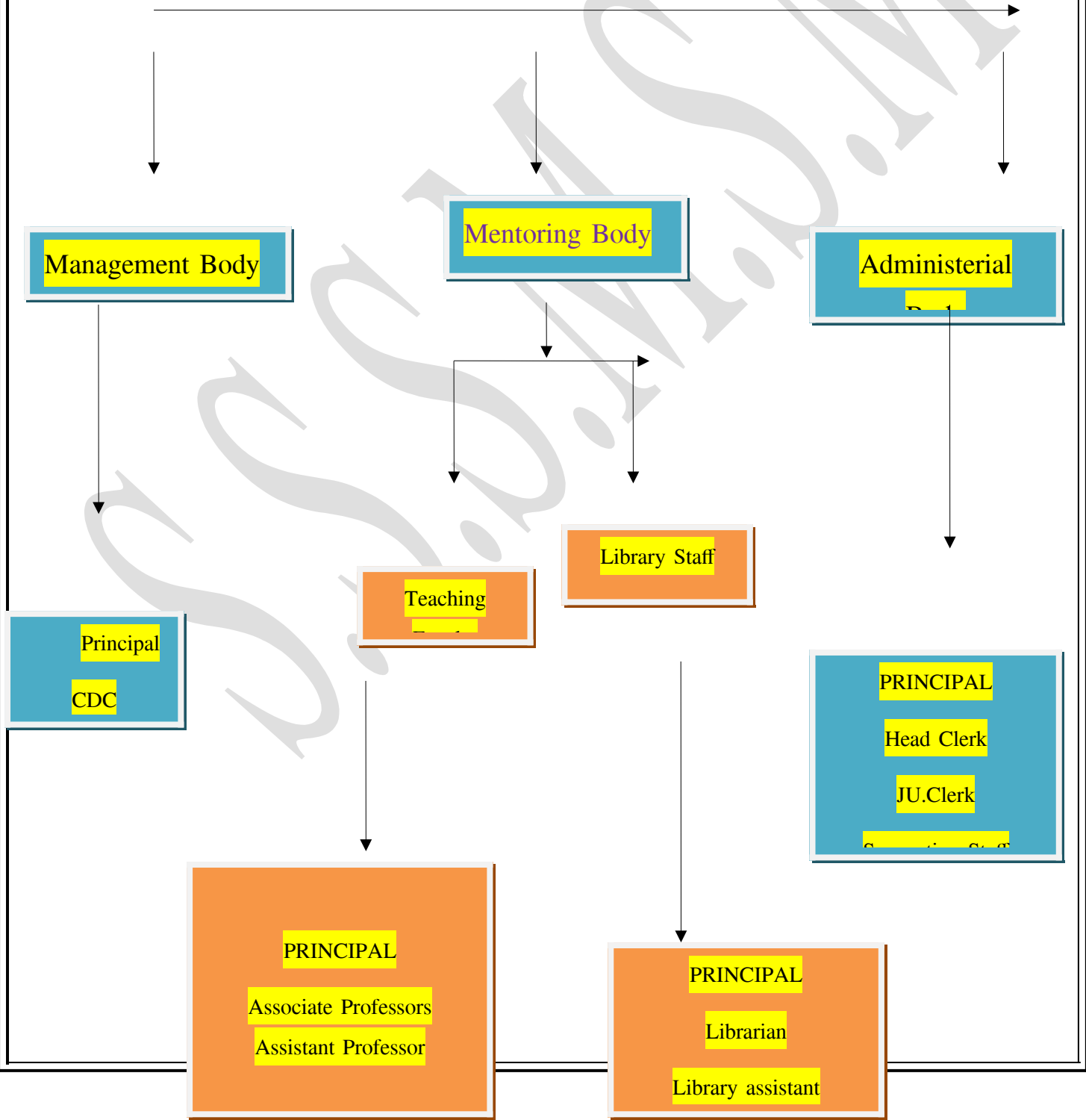
Teaching Faculty

Student Teachers

Administrative
Faculty

THE INTERNAL ADMINISTRATIVE BODY

I Internal Administrative Bodies





Shri Swami Vivekanand Shikshan Sanstha , Kolhapur

(Affiliated To Shivaji University, Kolhapur)

Sansthamata Sushiladevi Salunkhe Mahila Shikshanshastra Mahavidyalaya, Tasgaon

6.1.1

DOCUMENTS UPLOAD

Sr. No.	Documents
1.	College Development committee
2.	Management

	committee
3.	Life member Committee

College Development Committee

Principal. Abhaykumar Salunkhe	Management President
Principal. Shubhangi Gavade	Management Secretary
Principal.Dr.Baburao Malhari Patil	College Principal
Dr.Anil Tanaji Patil	Full Time Approved Teacher
Dr.Motilal Sukhdev Ubhale	Full Time Approved Teacher
Dr.Sou.Laxami Vishnu Bhandare	Full Time Approved Teacher(Female)
Shri.Sanjay Raghunath Kumbhar	Regular Non –Teaching Staff
Shri.V.J.Maske	Nominated Member From Education Field
Shri.Ramchandra Vasant Rao Mali	Nominated Member From Industry Field
Dr.Baburao Gurav	Nominated Member From Research Field
Prof.Sou.Aparna Surykant Patil	Alumni
Dr.Archana Shantinath Chikhalikar	Co-Ordinator , IQAC
Kum.Sonali Sunil Salgar	Student Representative



The Present Management Committee

Honorable. MLA Chandrkant (Dada) Bacchu Patil	Chairperson
Honorable. Namdevrao Vitthalrao Kamble	Vice president
Honorable. Lalashaeb Bhanudas Yadav	Vice president
Honorable. Principal. Abhaykumar Govindrao Salunkhe	Executive chairman
Honorable. Jaganath Rangnath Avate (Advocate)	Executive chairman
Honorable. Principal. Sou. Shubhangi Murlidhar Gavade	Secretary
Honorable. Principal. Dr. Rajendra Vishvnath Shejwal	Joint Secretary Administration
Honorable. Sitaram Maharu Gavali	Joint Secretary (Noun)
Honorable. MP. Shambhaji Shahu Chhatrapati	Member
Honorable. Avinash Dinkar Patil	Member
Honorable. Sadashiv Krishana Kumbhar	Member
Honorable. Bhaushaeb Nanashaeb Sangale	Member



Life Member Committee

Honorable.Sitaram Maharu Gavali	Chairperson
Honorable.Principal.Sou.Shubhangi Murlidhar Gavade	Secretary
Honorable.Principal.Dr.Rajendra Vishvnath Shejwal	Member
Honorable. Kaustubh Gavade	Chief executive officer
Honorable. Shasikant Yashwant Kate	Member
Honorable.Dr.Jayshing Shriram Deshmukh	Member
Honorable.Shriram Sharadchandr Salunkhe	Member
Honorable. Gulanrao Borote	Member
Honorable.Milind Hujre	Member
Honorable.Arun Kumbhar	Member
Honorable.Prakash Laxman Hakke	Member
Honorable. Ashok Mane	Member

